

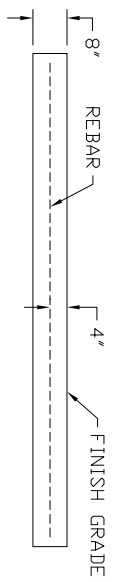
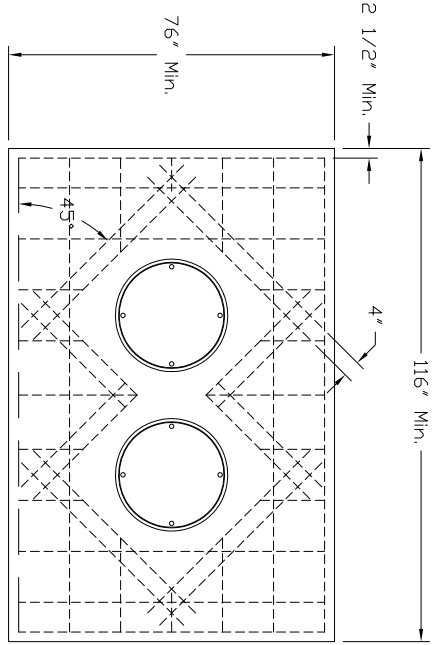
4

3

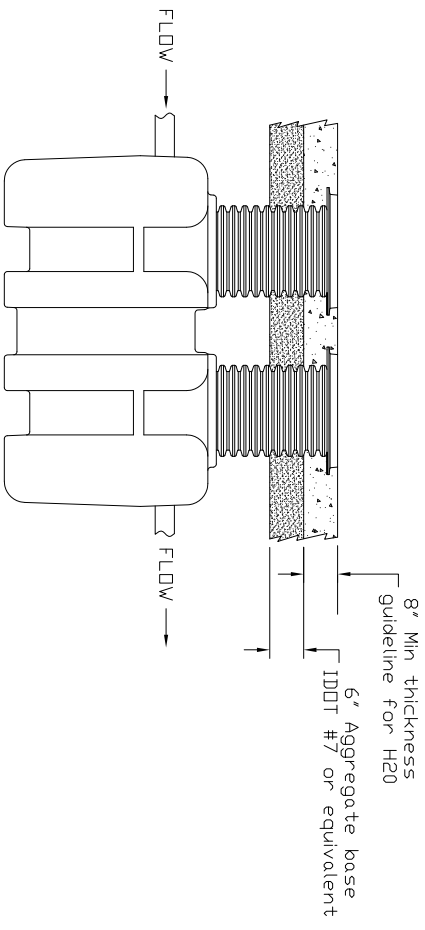
2

1

REVISIONS				
ZONE	REV	DESCRIPTION	DATE	APPROVED
ALL	0	RELEASE	DATE	JG



CONCRETE SLAB DETAIL FOR H20/HS20 LOAD RATING



INSTRUCTIONS FOR BELOW GRADE INSTALLATION

EXCAVATION

1. Install the interceptor(s) as close as practical to the fixtures being served.
2. The excavation must be a minimum of 12" greater on all sides of the tank.
3. The depth of the excavation must be greater than 6" on the bottom of the interceptor.
4. Fill the interceptor with water prior to backfilling in order to prevent the interceptor from floating.
5. Fully install the double wall corrugated pipe and lid prior to backfilling.
6. Concrete or finishing material requirements is to be determined by the specifying engineer.
7. Encase the interceptor in well-packed 3/4" rock, or sand. Do not compact backfill around interceptor.
8. To prevent float out; the Anchor kit is recommended for installations in high water table conditions. This is to be determined by the specifying engineer.

NOTES:

- Concrete to be 28 day compressive strength to 4000psi.
- No. 4 rebar (1/2"Ø) grade 60 steel per ASTM A615 connected with wire
- Rebar to be 2.5" from face of concrete.
- Rebar spacing 12" grid, 4" spacing around access openings.
- All penetrations to be sleeved or have slip connections.
- Minimum 36" from top of slab to top of tank.

TOLERANCES (UNLESS OTHERWISE SPECIFIED)

X ± .03
XX ± .015
XXX ± .010
L ± .1"

TP: DWG/T ANGLE = Z

DRAWN BY	JG	SIZE	COLOR/FINISH	DWG NO.	REV
APPROVED BY	JG	SCALE	MAT'L	BIG-1150-EXCAVATION	0



1150LB. INTERCEPTOR EXCAVATION DETAILS

SHEET 1 OF 1

4

3

2

1