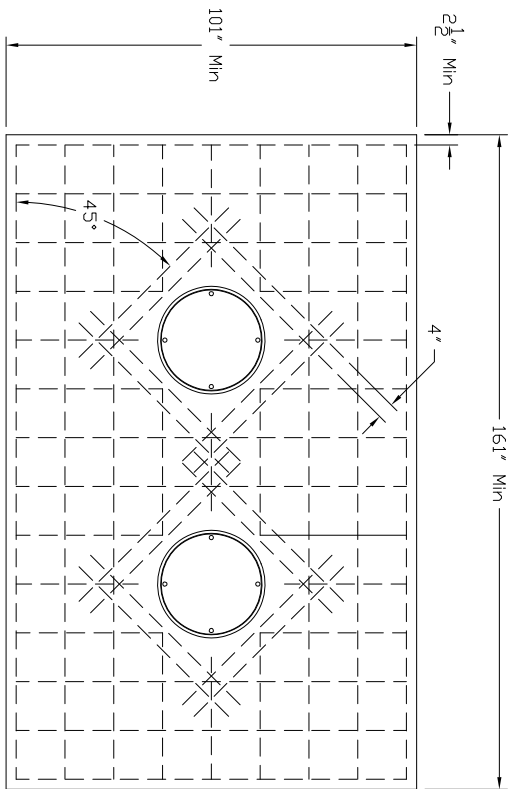


4

3

2

1



CONCRETE SLAB DETAIL FOR H20/HS20 LOAD RATING

REVISIONS			
ZONE	REV	DESCRIPTION	DATE
ATL	0	RELEASE	DATE

SUPERMAX INTERCEPTORS

1. Inlet and Outlet No-Hub Connections.
2. H20 Load Rated Access Covers
3. Maximum Operating Temperature: 190° Continuous

DETAILS

- Certified by CSA and IAPMO to ASME A112.14.3 and ANSI Z1001
- Factory installed internal piping.
- 3/8" thick seamless high density polyethylene.
- Full internal access through lids.
- Vent not required for proper operation.
- Designed for above or below ground installations.
- Integral Anti-siphon Air Relief port.

SUFFIX

- AK High water anchor kit
- C Lid extension(specify)
- DP Dosing pump
- EP Enzyme port
- F6 6" No Hub inlet/outlet connection
- HLA High level alarm

OPTIONAL VARIATIONS

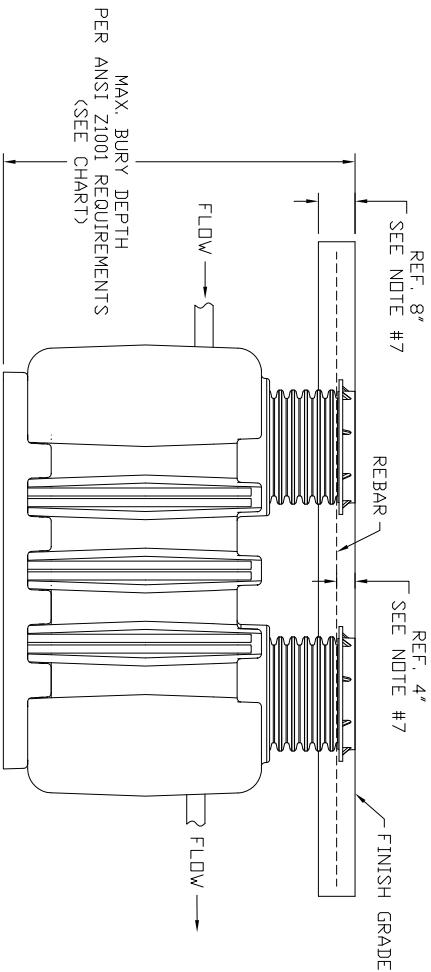
INSTRUCTIONS FOR BELOW GRADE INSTALLATION

EXCAVATION

1. Install the interceptor(s) as close as practical to the fixtures being served.
2. The excavation must be a minimum of 18" greater on all sides of the tank.
3. The depth of the excavation must be greater than 12" on the bottom of the interceptor.
4. Fill the interceptor with water prior to backfilling in order to prevent the interceptor from floating.
5. Fully install the double wall corrugated pipe and lid prior to backfilling.
6. Concrete or finishing material requirements is to be determined by the specifying engineer.
7. Encase the interceptor in well-packed 3/4" rock, or sand. Do not compact backfill around interceptor.
8. To prevent float out; the Anchor kit is recommended for installations in high water table conditions. This is to be determined by the specifying engineer.

NOTES:

- Concrete to be 28 day compressive strength to 4000psi.
- No. 4 rebar (1/2"φ) grade 60 steel per ASTM A615 connected with wire
- Rebar to be 4" from face of concrete.
- Rebar spacing 12" grid, 4" spacing around access openings.
- All penetrations to be sleeved or have slip connections.
- Minimum 18" from top of slab to top of tank.



Tank Capacity (gal)	Grease	Oil	MAX. BURY DEPTH (FT)
500	SUPER-500	SUPER-500-0	17
750	SUPER-750	SUPER-750-0	16
1000	SUPER-1000	SUPER-1000-0	16
1250	SUPER-1250	SUPER-1250-0	16
1300	SUPER-1300	SUPER-1300-0	16
1500	SUPER-1500	SUPER-1500-0	13
2000	SUPER-2000	SUPER-2000-0	12

MIFAB

SUPERMAX INTERCEPTOR
EXCAVATION DETAILS

SIZE: C
SCALE: ---
MATERIAL: ---

DWG NO. SUPER-EXCAVATE
SHEET 1 OF 1

REV 0

4

3

2

1